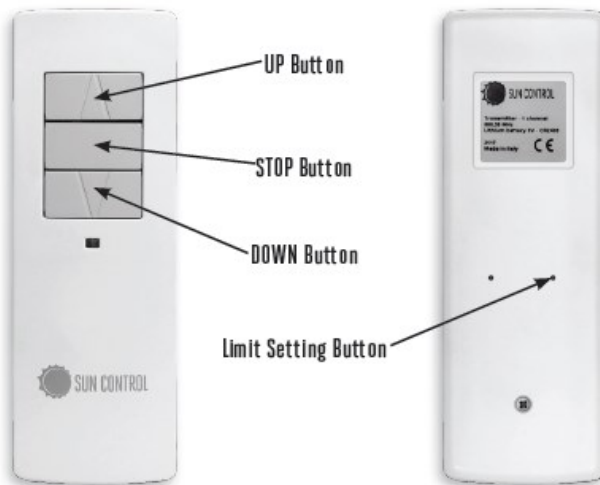


# PREMIUM SLIM LINE REMOTES

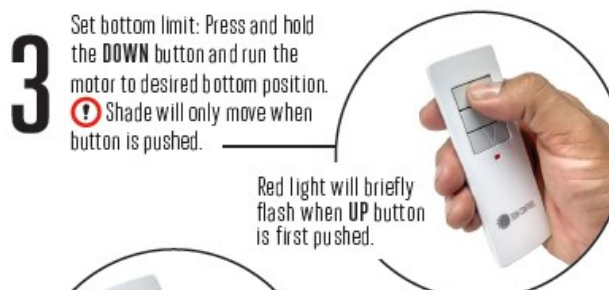
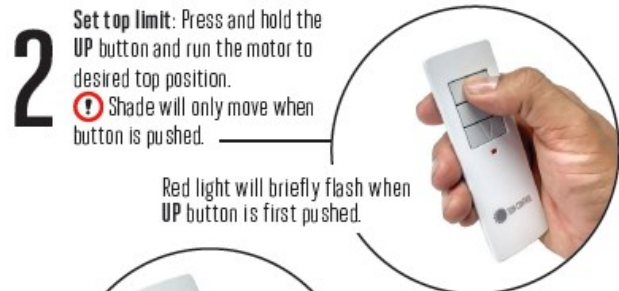
## LIMIT SETTINGS QUICK GUIDE



### LIMIT SETTING

**! ALWAYS SET THE TOP LIMIT FIRST**

**! Ensure the remote is held upright before entering limit programming mode.**



**! Remote is no longer in LIMIT PROGRAMMING MODE**

Limits are now set. When the **UP** button is pushed, shade will raise to the set upper limit and when the **DOWN** button is pushed, the shade will lower to the bottom set limit. Press **STOP** button at any time to stop the shade from moving in either direction.

**! Limit setting instructions are for 1 channel premium remotes. To set limit settings for 5 channel remotes, first ensure you are on the correct channel then follow the instructions to set limit settings.**

**5 YEAR MOTOR WARRANTY**