

manual

EXTERIOR FRT SHADE

FABRIC RETENTION TRACK



FRT STANDARD/HEAVY DUTY INSTALLATION INSTRUCTIONS

TOOLS NEEDED

INSTALLATION

TOOLS FOR ASSEMBLY

- Drill
- $\frac{3}{8}$ " Metal Drill Bit
- $\frac{1}{4}$ " Masonry Drill Bit
- Measuring Tape
- Pencil
- 4' - 6' Level
- Phillips #2 Driver
- Manual Screwdriver (Phillips)
- Driver for mounting fasteners
- Rubber Mallet

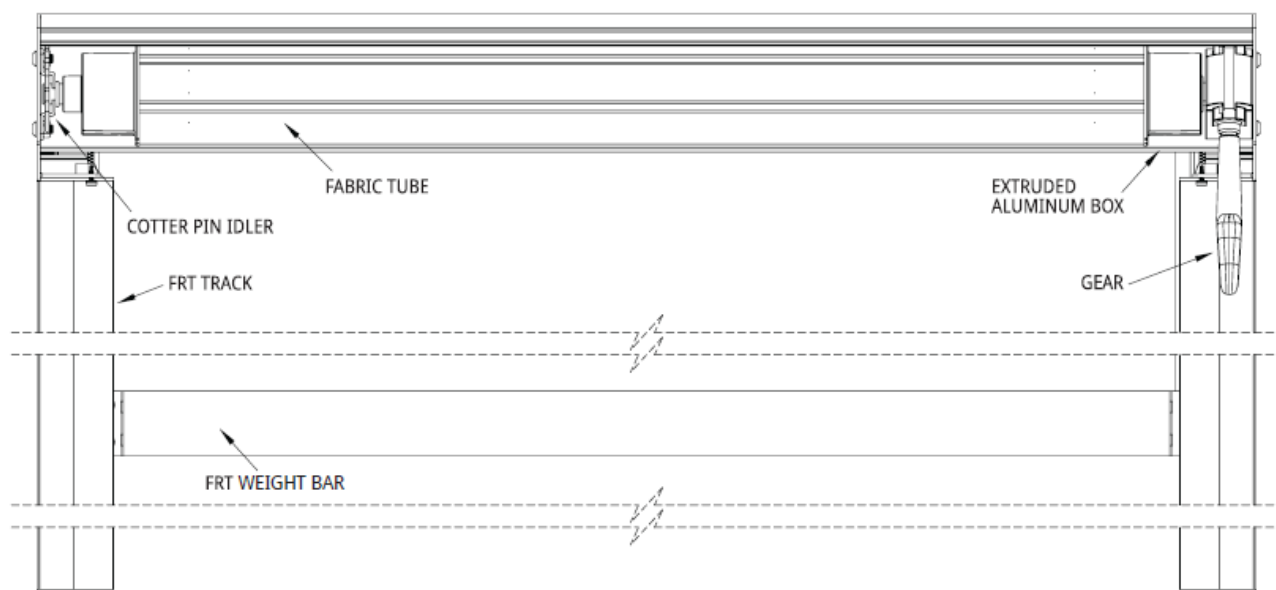
HARDWARE PROVIDED (PER SHADE)

- End Caps (2)
- Top Back of Box Piece
- Box Hood
- Hand Brace (1)
- Shade Tube (1)
- "L" Channel Brackets for inside mount (2) if ordered

NOTE: Hardware needed

- $\frac{5}{16}$ " X 4 $\frac{1}{2}$ " Torx Screws or Appropriate (4 per shade)
- $\frac{3}{8}$ " Flat Washers or Appropriate (4 per shade)
- 2 $\frac{1}{2}$ " Wood screws (6-8) or Appropriate
- $\frac{3}{4}$ " Sheet metal screws (6-8)
(For optional "L" channel mounting bracket)

COMPONENTS

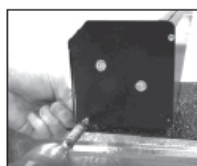
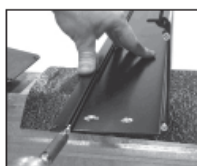


STEP 1

SHADE COMPONENTS

PREPARE BACK OF BOX

- Mounting holes on box should be evenly spaced and marked at 2" from each end.
- Drill 2 mounting holes using a $\frac{3}{8}$ " metal drill.
- Repeat on opposite side.
- Use screws installed in the top back box piece to install end caps on top back box piece. Screw screws on low speed.



Before you begin Remove parts from packaging

- ! If your installation requires "L" channel, refer to "**L" Channel Installation** on page "6" before preparing back of box.

! INFORMATION

- ! Due to the nature of these products, mounting procedures may vary. On-site adjustments to these instructions may be required to achieve optimal installation.
- ! These instructions represent a Surface mount installation.
- ! Surface mount holes are drilled on the back of the top back box piece and Under mount holes are drilled on the top of the top back box piece.

NOTE:

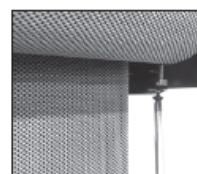
- ! 2 person job

HANG BACK OF BOX

- Hold top back box piece to surface, drill holes and secure lag screw with washer in bottom hole.
- Level top back box piece.
- Once top back box piece is secure, bolt 2 top lags and washers on each side.



- Remove and set aside hood screws under end caps on both sides.



! INFORMATION

Be sure mounting bolts will not interfere with fabric operation.

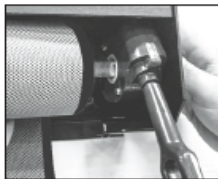
STEP 2

SHADE COMPONENTS CONT.

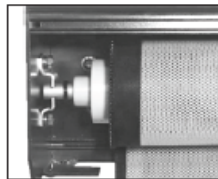
INSTALL FABRIC TUBE

- a. Remove cotter pin from non-operation end.

- b. Insert fabric tube into end caps, operation side first.



- c. Place pin idler into cradle. Reinstall cotter pin to lock into place.



NOTE:

! 2 person job

- d. Ensure the fabric tube is completely secure in its brackets inside of the box.



STEP 3

SIDE TRACK INSTALLATION

MEASURING / CUTTING THE SIDE TRACKS

- a. To determine track cut length, measure from the bottom of the box to the desired drop.
- b. Side tracks must be cut from the bottom end. You will need to remove bottom cap before cutting track.
- c. Verify you allowed for thickness of bottom cap in your deductions.
- d. Cut side track to desired height with insert and track cover in place.

! INFORMATION

Before cutting track, identify right and left track. Side tracks and "L" channels are shipped over length and require to be cut down during installation.



- e. From the full length of the cut side track, slide out snap-in track cover.
- f. Mark the left piece L and right piece R. These will be reinstalled later.
- g. Remove burrs from the bottom of the cut side track and install the bottom end cap.

STEP 4

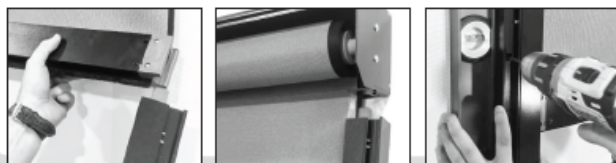
SIDE TRACK INSTALLATION

INSTALL FABRIC INTO SIDE TRACK

Before you begin

- ! Lower screen until the weight bar hangs at least 5" from the bottom most portion of the box.

- Insert fabric into side track and align outside of track with outside of box. Attach with top fastener only.
- Repeat with opposite track.
- Check that tracks are leveled and install bottom fastener to secure track.



- Add additional fasteners as needed, checking continually to make sure no binding has occurred. Install fasteners in additional pre-drilled holes.

NOTE:

- ! After installing bottom fastener, if binding occurs while fabric is going down, loosen bottom fastener and allow fabric to correct itself.



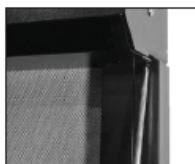
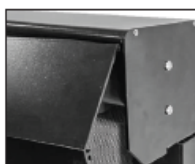
- Install the track cover working from top to bottom (making sure you have the correct cover for each side track). You may use a rubber mallet to tap track cover in place.

STEP 5

SHADE COMPONENTS CONT

INSTALL BOX HOOD

- Set the box hood into groove on the top of the top back piece of the box and hinge to set into place.
- Use the 2 hood screws removed from the end caps on the top back box piece to secure box hood.



NOTE:

- ! Before securing box hood, rotate gear to lie vertical.

ENJOY THE SHADE

OPTIONAL "L" CHANNEL

"L" CHANNEL INSTALLATION

! INFORMATION

Do NOT attach side tracks to structure at this time. "L" Channels are shipped over length and require to be cut down during installation.

INSTALL "L" CHANNEL

- If using the optional "L" channel, cut to full height of opening length at this point.

NOTE:

- ! It is recommended you pre-drill the "L" channel prior to installing.



- The back of the "L" channel will be lined up with the back of the box.



- Install the top mounting fastener, level the "L" channel and install the bottom fastener.



- Add additional fasteners as needed approx. 1 fastener every 2 feet.
- Proceed to Prepare Back of Box. (Page 3)

INSTALL FABRIC INTO SIDE TRACK WITH "L" CHANNEL

Before you begin

- ! Remove track covers and set aside



- Insert fabric into side track and align outside of track with outside of box. Attach with top fastener only.



- Repeat with opposite track.

- Check that the tracks are leveled.



- Install bottom fastener to secure track.



- Install the track cover working from top to bottom.



Make sure you have the correct cover for each side.

NOTE:

- ! After installing bottom fastener, if binding occurs while fabric is going down, loosen bottom fastener and allow fabric to correct itself.